

全漢企業股份有限公司

SPARKLE POWER INT'L.,LTD

台灣 桃園市大有路 487 號 6 樓之 1

6F-1,NO.487,Ta-Yu Rd.,Taoyuan City, Taiwan,R.O.C.

TEL:+886-3-356-5188 FAX:+886-3-356-4969

SPECIFICATION

FSP350-60BTP

R&D	工程部	審 核	REV.
			暫用

TABLE OF CONTENTS	PAGE
1. GENERAL REQUIREMENTS	3
2. INPUT REQUIREMENTS	3
3. OUTPUT REQUIREMENTS	3
3.1 OUTPUT VOLTAGE AND CURRENT	3
3.2 REMOTE ON/OFF CONTROL	4
3.3 OUTPUT VOLTAGE HOLD-UP TIME	4
3.4 OPERATION AT NO LOAD	4
3.5 PROTECTION	4
3.6 OUTPUT RISE TIME	5
3.7 OUTPUT OVERSHOOT	5
3.8 EFFICIENCY	5
3.9 POWER GOOD SIGNAL	5
3.10 POWER FAIL SIGNAL	6
4. PHYSICAL ENVIRONMENT	6
4.1 OPERATING CONDITIONS	6
4.2 STORAGE AND SHIPPING CONDITIONS	6
4.3 SHOCK AND CONDITIONS	7
5. REGULATORY COMPLIANCE	7
5.1 SAFETY REQUIREMENTS	7
5.2 DIELECTRIC STRENGTH	7
5.3 INSULATION RESISTANCE	7
5.4 GROUND LEAKAGE CURRENT	7
5.5 EMISSION REQUIREMENTS	7
6. OTHER REQUIREMENTS	8
6.1 COOLING	8
6.2 INPUT CONNECTIONS AND CONTROLS	8
6.3 RELIABILITY	8

1.0 GENERAL REQUIREMENTS

This specification describes a 350 watts power supply. With active PFC circuit (PF>0.95) .And + 5V stand-by and remote ON/OFF control for ATX system.

2.0 INPUT REQUIREMENTS

The power supply shall operate from 180 to 264 Vrms.

The power supply shall operate from an AC mains frequency of 47 through 63 Hz.

The Ac mains single-cycle peak inrush current shall be limited to 80 amps cold, 100 amps warm measured at 264 Vrms, 63 Hz and coinciding with the AC main voltage peak.

The AC mains steady-state RMS input current shall be:.

5.0 amps maximum / 230 Vrms, 50 Hz.

3.0 OUTPUT REQUIREMENTS

3.1 OUTPUT VOLTAGE AND CURRENT

	MINIMUM LOAD	NORMAL LOAD	MAXIMUM LOAD	LOAD REG.	LINE REG.	RIPPLE & NOISE
+3.3V	0.2A	14.0A	18/28A	±5%	±1%	50mV P-P
+5V	2.0A	12.7A	32/25.5A	±5%	±1%	50mV P-P
+12V	0.2A	4.5A	16A	±5%	±1%	120mV P-P
-12V	0.0A	0.4A	0.8A	±10%	±2%	120mV P-P
-5V	0.0A	0.15A	0.3A	±10%	±2%	100mV P-P
+5Vsb	0.0A	1.0A	2.0A	±5%	±1%	50mV P-P

(1)+3.3V &+5V total output not exceed 220W.

When +3.3V is load to 28A,the +5V maximum load is 25.5A.

When +3.3V is load to 18A,the +5V maximum load is 32A.

(2)+3.3V &+5V& +12V total output not exceed 330W.

(3)All outputs shall be safety-isolated from the AC mains and share a common return. This common return must be connected to supply chassis.

(4)Voltages and ripple are measured at the load side of mating connectors with a 0.1 uF monolithic ceramic capacitor paralleled by a 10 uF electrolytic capacitor across the measuring terminals.

LOAD REGULATION CHARACTERISTICS

NO.	LOAD CONDITION	OUTPUT LOAD					
		+3.3V	+5V	+12V	-12V	-5V	+5Vsb
1	COND.1	28A	25.5A	9.0A	0.8A	0.3A	2.0A
2	COND.2	14A	12.7A	5.0A	0.4 A	0.15A	1A
3	COND.3	10A	15A	8.0A	0.6A	0.2A	0.75A
4	COND.4	3.5A	5.0A	16A	0.8A	0.25A	0.2A
5	COND.5	0.2A	4.0A	9.0A	0.3A	0A	1.0A
6	COND.6	2.0A	25A	4.0A	0.5A	0.05A	1.5A
7	COND.7	28A	4.0A	0.2A	0.05A	0.05A	0.5A
8	COND.8	0.2A	20A	3.0A	0.7A	0.3A	2.0A
9	COND.9	0.2A	2.A	0.2A	0A	0A	0A

3.2 REMOTE ON/OFF CONTROL

The power supply shall accept a logic open collector level which will disable

/ enable all the output voltage (exclude + 5V standby).

As logic level is low, outputs voltage were enable.

As logic level is high, outputs voltage were disable.

Note: 1. Logic high level :3.50-5.25V while sourcing 0.4mA maximum.

2. Logic low level : 0-0.5V while sinking 1.5mA maximum.

3. Rise Time : 2ms maximum (10%-90%).

3.3 OUTPUT VOLTAGE HOLD-UP TIME

20.0 mS minimum : at 230V / 50 Hz.

3.4 OPERATION AT NO LOAD

The power supply shall be capable of being operated with no load on any or all outputs without damage. For no load on +3.3V&+5V, the output shall not exceed +4.5 & +6.5Vdc and the power supply may shutdown and require by remote-control or remove AC power restart.

3.5 PROTECTION

3.5.1 OVER-VOLTAGE PROTECTION

In the event of an over-voltage condition on +3.3 & +5Vdc &+12V the power supply shall shutdown and require remote control or remove the AC mains input to reset the system.

+5V : 6.5V(maximum)

+3.3V : 4.6V(maximum)

+12V : 15.5V(maximum)

3.5.2 OVER-CURRENT PROTECTION

There shall be protection from an output over-current event. The supply may shutdown from such an event and require power-on restart. Testing consists of application of the listed over-current value with maximum load on all other outputs.

Over-current test values: (maximum load)

+3.3V : 81A maximum

+5V : 65A maximum

+12V : 30A maximum

3.5.3 SHORT-CURRENT PROTECTION

A short circuit at any output shall cause no damage to the power supply nor blow the primary fuse. The supply may shut down in the event of a short circuit and require power-on restart. A short circuit consists of application of a test resistance of less than 0.01 ohms at each output with maximum load on all outputs.

3.6 OUTPUT RISETIME

The cold-start enable output voltage risetime of all outputs shall be measured with maximum load on all outputs.

risetime :	+3.3V	20mS (maximum)
(10-90%)	+5V	20mS (maximum)
	+12 V	20mS (maximum)
	-12 V	20mS (maximum)
	-5V	20mS (maximum)
	+5Vsb	20mS (maximum)

3.7 OUTPUT OVERSHOOT

No output voltage shall overshoot or generate spikes at turn-on or turn-off, during momentary power loss, output short, or realistic input voltage or output load changes, Overshoot is defined as any output that exceeds the voltage tolerance plus or minus an additional 5%.

3.8 EFFICIENCY

Overall efficiency must be 65% minimum measured at normal AC mains voltage and frequency with maximum loads on all outputs.

3.9 POWER GOOD SIGNAL

230V (FULL LOAD) : 100-500mS

3.10 POWER FAIL SIGNAL

230V (FULL LOAD) : 1mS minimum.

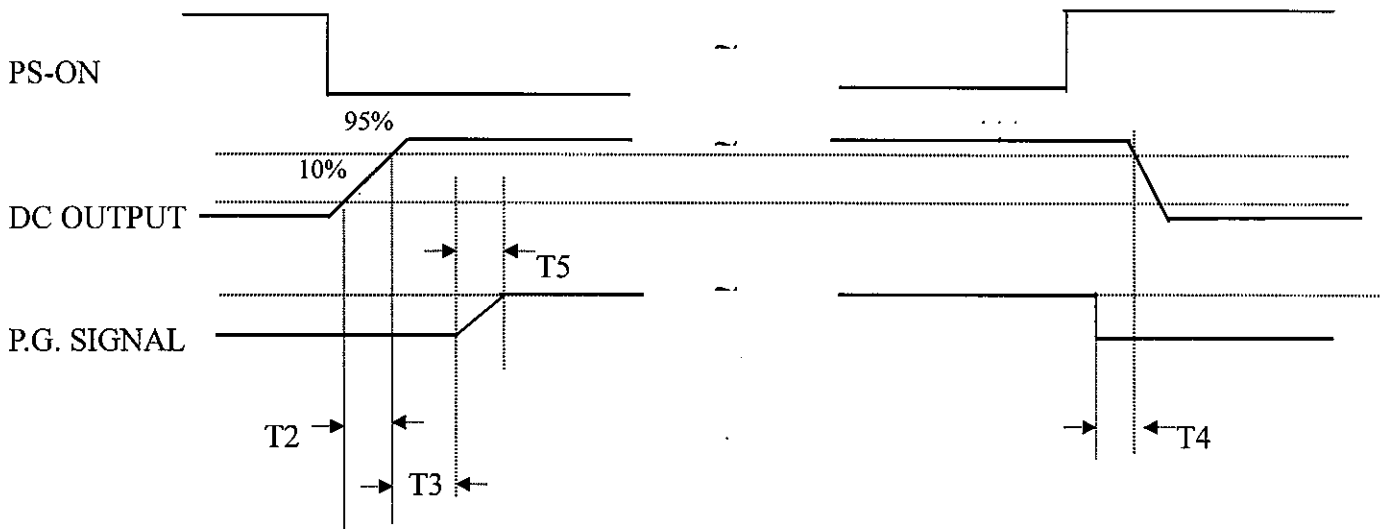


Figure 1

T2 : RISETIME < 20mS

T3 : POWER GOOD DELAY TIME 100mS-500mS

T4 : POWER FAIL DELAY TIME > 1mS

T5 : POWER GOOD RISETIME \leq 10mS

4.0 PHYSICAL ENVIRONMENT

4.1 OPERATING CONDITIONS

The power supply shall be capable of continuous operation and meet all electrical specification without need for adjustment when subjected to the following environmental conditions:

4.1.1 AMBIENT TEMPERATURE : 0 TO 40°C

4.1.2 RELATIVE HUMIDITY : 90%

4.2 STORAGE AND SHIPPING CONDITIONS

No degradation of the power supply shall occur during shipping or storage at the specified conditions.

4.2.1 AMBIENT TEMPERATURE : -20 TO +65°C

4.2.2 RELATIVE HUMIDITY : 95%

4.3 SHOCK AND VIBRATION

The power supply will withstand the following imposed conditions without experiencing non-recoverable failure or deviation from specified output characteristics.

Storage -40G, 11mSec. half-sine wave pulse in both directions on three mutually perpendicular axes.

Operating -10G, 11mSec. half-sine wave pulse in both directions on three mutually perpendicular axes.

Vibration Operation-Sine wave excited, 0.25G maximum acceleration. 10-250 Hz, swept at one octave/min. Fifteen minute dwell at all resonant points, where resonance is defined as those exciting frequencies at which the device under test experiences excursions two times large than non-resonant excursions.

5.0 REGULATORY COMPLIANCE

5.1 SAFETY REQUIREMENTS

-CE

-VDE

-NEMKO + CB REPORT

5.2 DIELECTRIC STRENGTH

Primary to Frame Ground : 1800 Vac for 1 sec.

Primary to Secondary : 1800 Vac for 1 sec.

5.3 INSULATION RESISTANCE

Primary to Secondary : 20 Meg. ohms Minimum.

Primary to FRAME GROUND : 20 Meg. ohms Minimum.

5.4 GROUND LEAKAGE CURRENT

The power supply ground leakage current shall be less than 3.5mA.

5.5 EMISSION REQUIREMENTS

When testing the power supply must operate within the listed requirements.

6.0 OTHER REQUIREMENTS

6.1 COOLING

With the fan voltage set to around 12 volts, the fan will deliver greater than 15 CFM with the power supply in open air.

6.2 INPUT CONNECTIONS

Refer to Mechanical Specifications for placement.

The AC mains input are through a three-circuit IEC type connector mounted on the rear of the power supply chassis.

6.3 RELIABILITY

The power supply reliability, when calculated by MIL-HDBK-217; latest revision, are exceed 100.000 hours with all output at maximum load and an ambient temperature of 25°C.